

## Description and Operation

### Horns Operation

The horn system starts at the underhood electrical center with the horn MiniFuse® fuse. The circuit goes from the horn MiniFuse® fuse to the the H/L DR HORN MaxiFuse® and from there to the horn relay. At the relay the circuit splits. One branch of the circuit goes through the relay coil to the horn switch in the steering column. The other branch of the circuit goes through the relay contacts to the horn.

When closed, the horn switch provides a ground path for the horn relay coil. The current flows into the relay coil, closing the contacts which allows the horn to sound.

### Horns Circuit Description

#### Chevrolet

Battery voltage is applied at all times to the horn relay at the following terminals:

- Terminal E6
- Terminal E8

A ground is placed on the horn relay coil at terminal F8 when one of the following actions occur:

- A horn switch is pressed
- The body control module (BCM) initiates a tamper/alarm cycle

The horn relay contacts close. This action applies battery voltage to the horns. The horns continue to sound until one of the following actions occur:

- The horn switch is released.
- The tamper/alarm cycle ends.

#### Pontiac

Battery voltage is applied at all times to the horn relay at the following terminals:

- Terminal E6
- Terminal E8

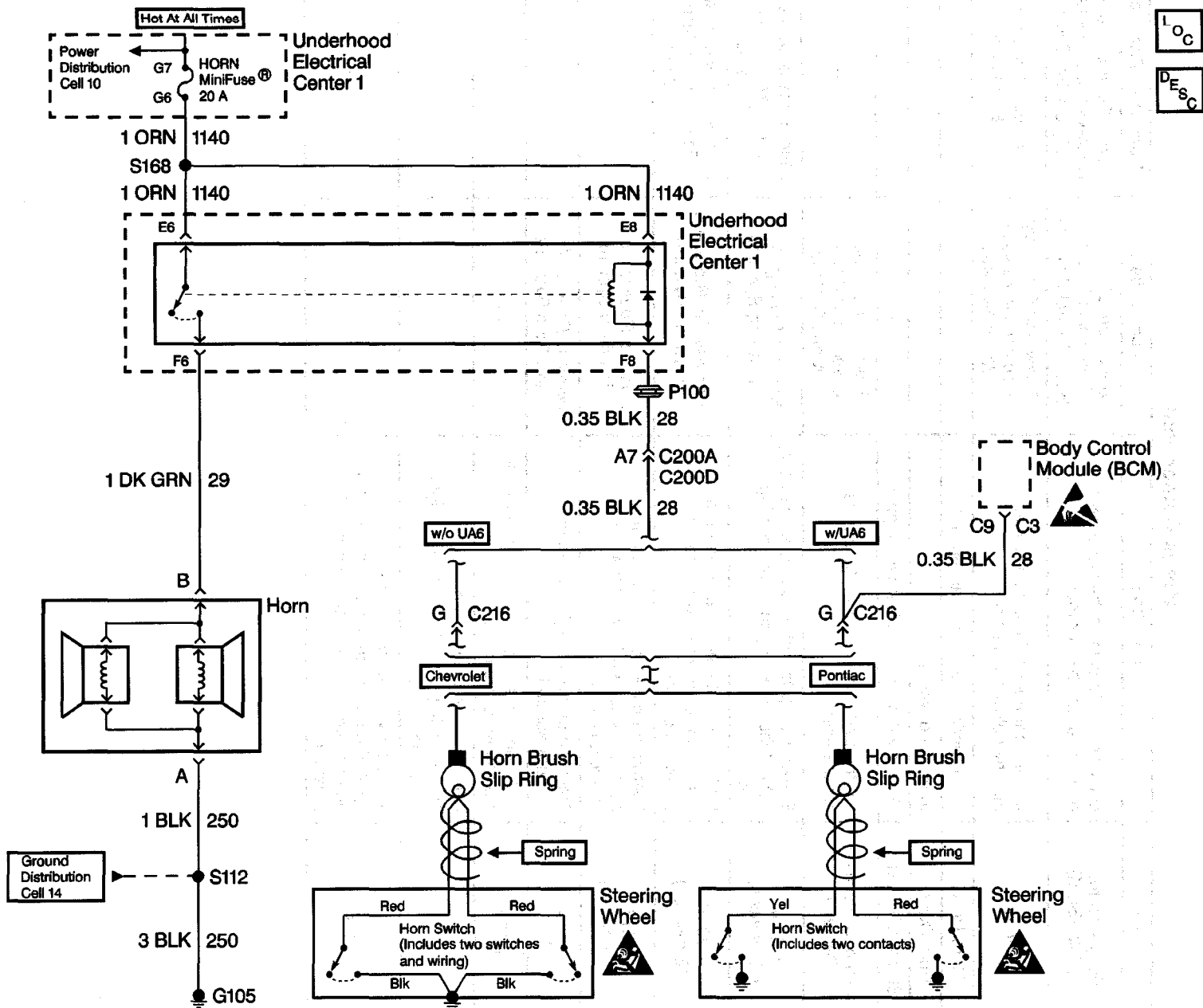
A ground path is provided to the horn relay coil at terminal F8 under the following conditions:

- When the inflator module is pressed against a spring loaded ground plate in the steering wheel.
- When the BCM initiates a tamper/alarm cycle

The horn relay contacts close. This action applies battery voltage to the horns. The horns continue to sound until one of the following actions occur:

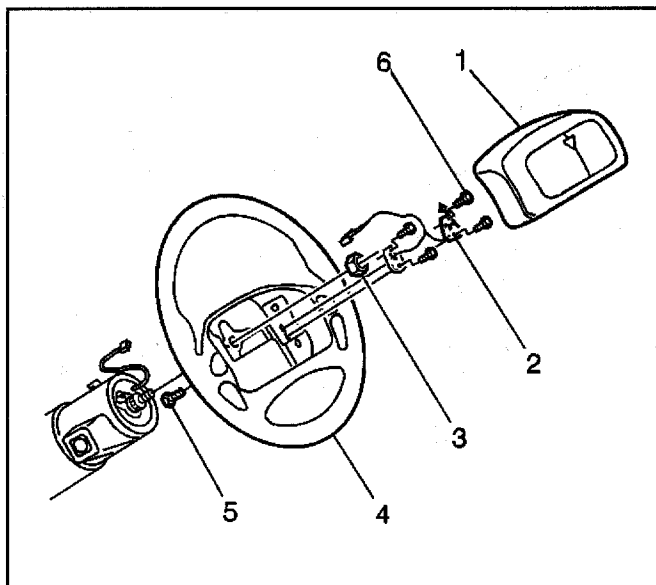
- The inflator module is released.
- The tamper/alarm cycle ends.

### Horns Schematics (Cell 40)



## Horns Always On

Step	Action	Value(s)	Yes	No
1	Disconnect the horn relay. Are the horns on?	—	Go to Step 2	Go to Step 3
2	Repair the short to B+ in CKT 29 between the underhood electrical center 1 terminal F6 and the horn connection terminal B. Is the repair complete?	—	System OK	—
3	Connect a test lamp from the underhood electrical center 1 terminal E6 to terminal F8. Does the test lamp light?	—	Go to Step 4	Go to Step 5
4	1. Ensure that the test lamp is still connected. 2. Disconnect harness connector C216. Is the test lamp still on?	—	Go to Step 6	Go to Step 7
5	Replace the horn relay. Refer to <i>Horn Relay Replacement</i> . Is the repair complete?	—	System OK	—
6	1. For vehicles without UA6, repair the short to ground in CKT 28 between the underhood electrical center 1 terminal F8 and C216 terminal G. 2. For vehicles with UA6, ensure that the test lamp is connected. 3. Disconnect connector C3 from the body control module (BCM). Is the test lamp still on?	—	Go to Step 8	Go to Step 9
7	Replace the horn switches. Refer to <i>Horn Switch Replacement - On Vehicle (Chevrolet)</i> or <i>Horn Switch Replacement - On Vehicle (Pontiac)</i> . Is the repair complete?	—	System OK	—
8	Repair the short to ground in CKT 28 at one of the following areas: • Between the body control module (BCM) connector C3 terminal C9 and C216 terminal G • Between C216 terminal G and the underhood electrical center 1. Is the repair complete?	—	System OK	—
9	Replace the body control module (BCM). Refer to <i>Body Control Module Replacement</i> in <i>Body Control Systems</i> . Is the repair complete?	—	System OK	—



290329

## Horn Switch Replacement - On Vehicle (Pontiac)

### Removal Procedure

1. Remove the inflatable restraint steering wheel module (1). Refer to *Steering Wheel Inflator Module Replacement*.
2. Remove the horn wiring connector from the steering column.
3. Remove the bolts/screws (6).
4. Remove the horn switch (2) from the steering wheel (4).

### Installation Procedure

1. Position the horn switch (2) to the steering wheel (4).

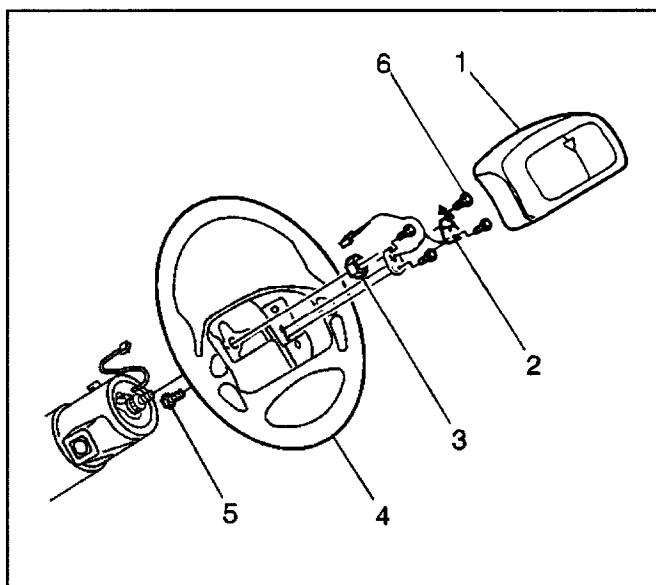
**Notice:** Refer to *Fastener Notice* in Cautions and Notices.

2. Install the bolts/screws (6).

#### Tighten

Tighten the bolts/screws (6) to 1.9 N·m (17 lb in).

3. Install the horn wiring connector to the steering column.
4. Install the inflatable restraint steering wheel module (1). Refer to *Steering Wheel Inflator Module Replacement*.

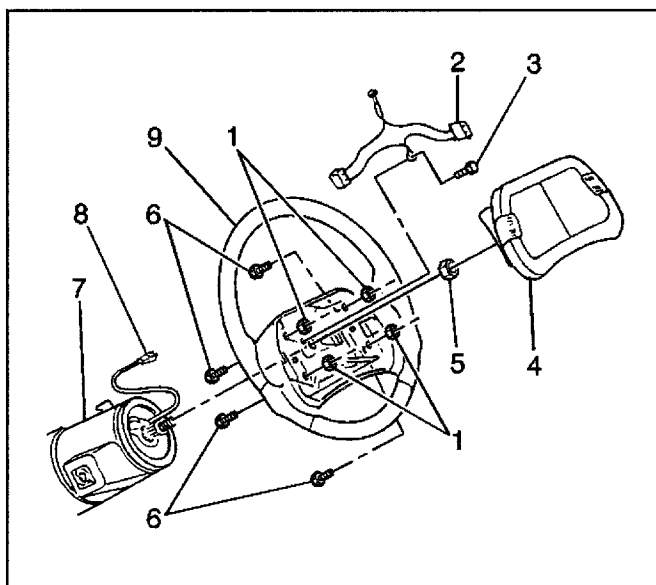


290329

## Horn Switch Replacement - On Vehicle (Chevrolet)

### Removal Procedure

1. Remove the inflatable restraint steering wheel module (4). Refer to *Steering Wheel Inflator Module Replacement*.
2. Remove the bolt/screw (3).
3. Use the following steps in order to remove the horn switch (2) from the inflatable restraint steering wheel module (4):
  - 3.1. Lift up on the edge of the module cover at the horn button. This action provides access to the horn switches.
  - 3.2. Press the lock tang.
  - 3.3. Remove the horn switch (2).
  - 3.4. Repeat the above steps in order to remove the remaining horn switch.



290190